

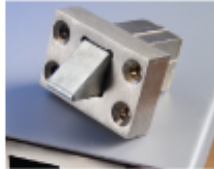


## storm proof design helps save lives

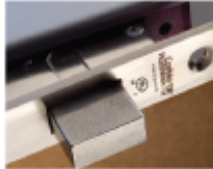
# Fortified Three-Point Latching System

for Community Shelter Door Assembly

Corbin Russwin's FE6800 is a robust three-point locking system engineered to help save lives by securing the community shelter entry. Extra-heavy duty steel components secure the door to the frame – at the top, bottom and center latch points – fortifying the opening to withstand extreme wind speeds and flying debris. The FE6800 is UL approved to both FEMA 361 and FEMA 320 guidelines.



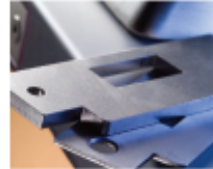
**Top Latchbolt**  
5/8" stainless steel housings, 3/4" projection with 1/8" door gap



**Center Bolt**  
Stainless steel deadbolt with 1" projection



**Bottom Bolt**  
3/4" diameter steel with 3/4" projection



**Center Bolt Strike**  
1/4" stainless steel strike versus 1/8" standard wrought strike

Look for the ad in the September and November issues of *The Construction Specifier* and the October issue of *Locksmith Ledger*.

For more information, contact your local ASSA ABLOY Door Security Solutions sales representative or call us at 800-543-3658 or visit [corbinrusswin.com](http://corbinrusswin.com).

Got questions? Email us at [enews@corbinrusswin.com](mailto:enews@corbinrusswin.com).



click to enlarge

